



MacSync-LW6 Overview :

MacSync-WS6 is a rugged and intelligent LoRaWAN® weather station designed for reliable, real-time environmental monitoring. Built for harsh environments, it features a robust, UV-resistant housing and IP66-rated protection, ensuring long-term durability even in extreme weather conditions

Whether deployed in vineyards, solar farms, research facilities, or smart infrastructure projects, MacSync-LW6 provides the environmental intelligence you need to make data-driven decisions with plug-&-play compatibility across the MacSync ecosystem.

Sensors

Amb. Temperature

Humidity

Wind Speed

Wind Direction

Atm. Pressure

Rainfall

Features

Wireless Technology



High-Precision Multi-Parameter Sensors

For accurate weather sensing

LoRaWAN® Class A & C communication

Communication for flexible uplink strategies

IP66-Rated Enclosure (Sensor)

Designed for industrial & outdoor environments

Supports periodic, threshold-based, & event-driven uplinks

BLE Support

Easy local configuration and diagnostics with Maya

Ultra-long-range transmission

Up to 08 km line of sight

Supports Macnman Beam Protocol

Direct control, & local device-to-device actions

Secure onboarding with pre-flashed DevEUI / AppEUI / AppKey

Optional Onboard Data Buffering

To prevent data loss in case of network downtime

Compatible with all LoRaWAN® network servers & gateways

 Specifications

Measurement

Parameter	Range	Accuracy	Resolution
Ambient Temperature	-40°C to +85°C	±0.3°C @ 25°C	0.01°C
Relative Humidity	0% to 100% RH	±3% RH(@90 %RH)	0.01% RH
Wind Speed	0–60 m/s	±(0.3 + 0.03V) m/s	0.01 m/s
Wind Direction	0°–359.9°	±3° (Speed< 10 m/s)	0.1°
Atmospheric Pressure	500–1100 hPa	±0.5 hPa (25°C)	0.1 hPa
Rainfall	0–200 mm/h	0.2 mm	

Wireless Transmission

Technology	LoRaWAN® (v1.0.4), Macnman Beam Protocol
Antenna	Internal high-efficiency antenna
Supported Bands	IN865 / RU864 / EU868 / US915 / AU915 / KR920 / AS923-1/2/3/4
Tx Power	16 dBm @ 868 MHz 20 dBm @ 915 MHz 19 dBm @ 470 MHz
Sensitivity	-137 dBm @ 300 bps
Activation	OTAA / ABP
LoRaWAN® Class	Class A (default), Configurable to Class C via Maya

Led Status

LED Type	2 Internal Multi-Color LED
Solid Blue	Device is connected with Maya App
Flashing Blue	OTA (Over-the-Air) update in progress
Slow Blinking Green	Attempting to connect to the LoRaWAN® network
Single Red Blink	A confirmed parameter of MacSync is being modified

Configuration

Configuration	Via Macnman Maya Android App
Maya Fatures	Threshold / Trigger / Sample based alarm triggers
Stored Records	30,000 Records (accessible via Maya)
Remote Configuration	Yes - JSON format Data

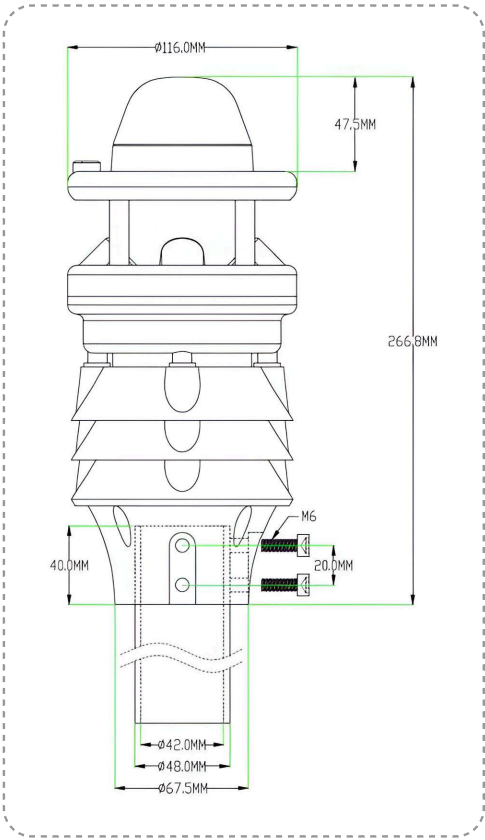
Physical Characteristics

Power Supply	Solar Panel (Monocr ystalline) & Inbuilt Batter y
Solar Panel	Solar Panel (Monocr ystalline)
	Power : 0.5W to 1 W - 1 2 V
Operating Temp	- 40° C to +80° C
Humidity Range	0% to 1 00% RH (non- condensing)
Ingress Protection	IP 65 standard (IP 67 optional variant)
Housing Material	Glass Field Nylon
Color	Matte W hite
Weight	~440g (with 12Ah battery & without solar panel)

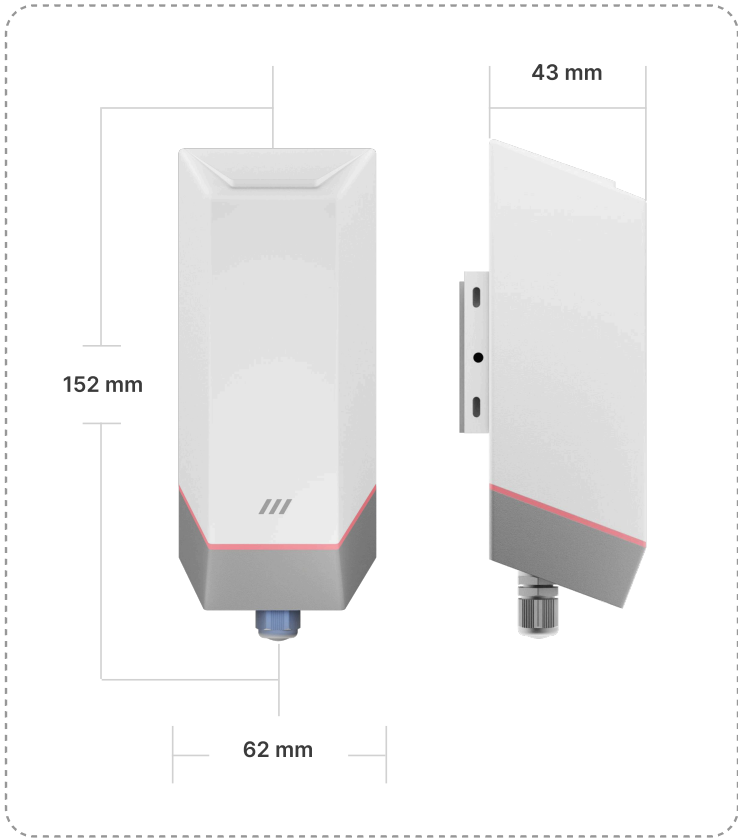
Dimensions	Approx. 152 mm X 62 mm X 43 mm (customizable branding available)
Mounting Options	Standard Product is sleeve fixed
	Fixed Bracket - 1.5 meter or 1.8 meter bracket
Cable	3 meter cable line
IP Rating(MacSync)	IP65

Certifications	
Regulatory	WPC , CE (Sensor)
Environmental	RoHS compliant

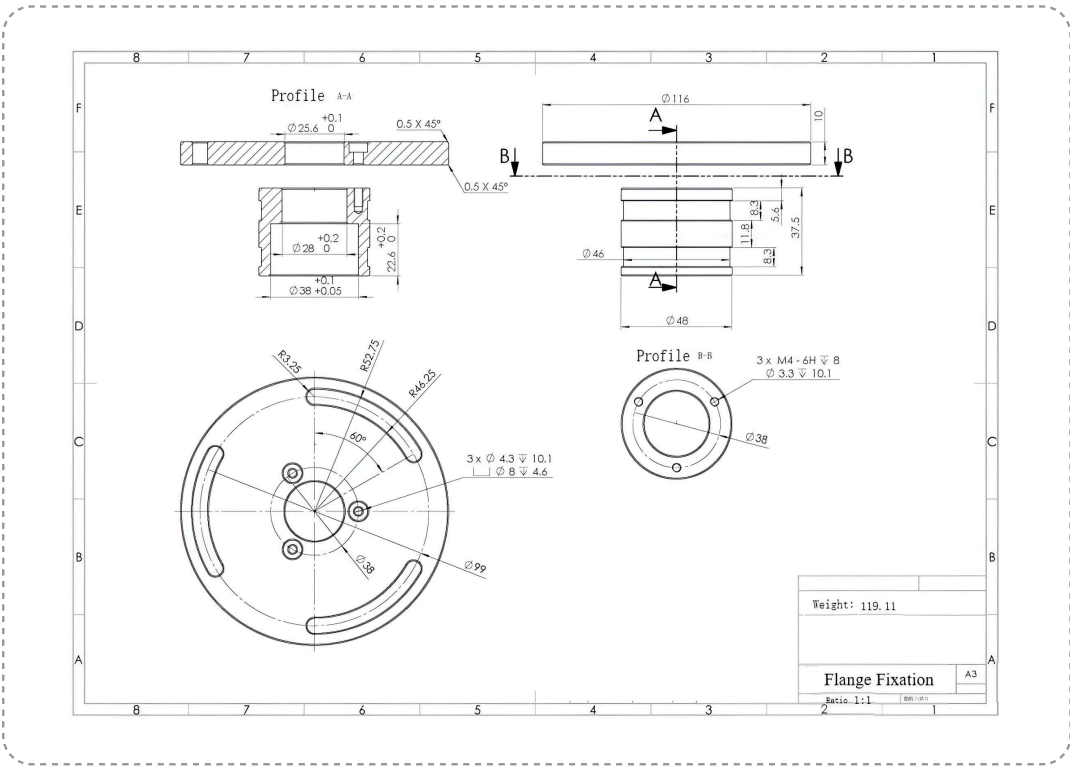
Product Dimension



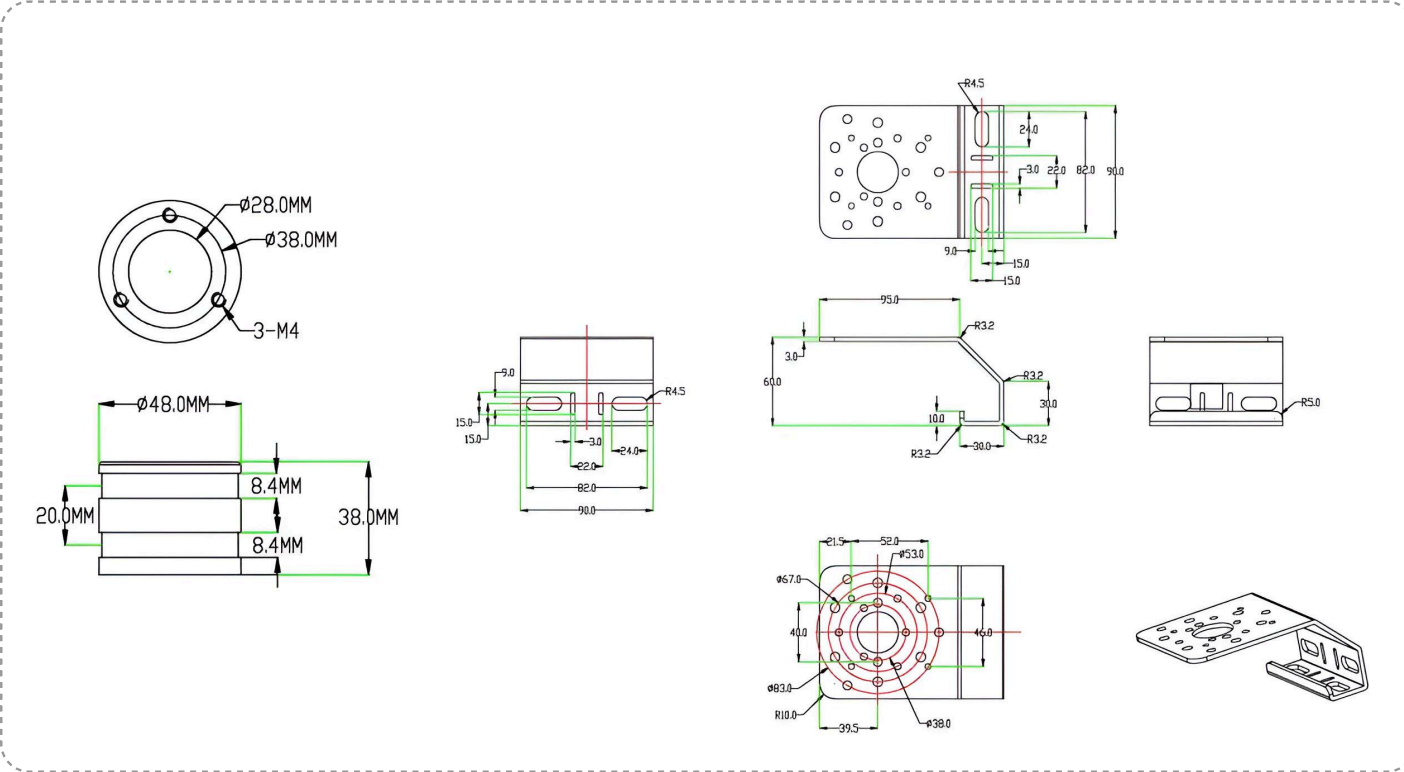
MacSync-LW1 Sensor



MacSync - Standard Version



Flange Mounting Plate



Bending Mounting Plate

y to serve you. तुमची सेवा करण्याची संधी दिल्याबद्दल धन्यवाद. మీకు సేవ చేసే అ
के अवसर के लिए धन्यवाद भवतः सेवायाः अवसरस्य कृते धन्यवादः તમારી સેવા કરવાની

Say Hello 🙌

- 🌐 www.macnman.com
- ✉ info@macnman.com
- 📞 +91 7972856163
- 📍 SHOP-15, 635 1B, Bibwewadi, Pune,
Maharashtra 411037

Support Mails

- ✉ chat@macnman.com
- ✉ helpdesk@macnman.com
- ✉ support@macnman.com

This manual and all its contents are the intellectual property of Macnman Technologies Pvt. Ltd. and are protected under Indian copyright laws and applicable international conventions.

All trademarks, certifications, and logos mentioned in this document or related products are used with appropriate licensing. These may include, but are not limited to, certifications such as CE, FCC, RoHS, REACH, BQB, WEEE, and others. Ownership of trademarks, logos, and trade names remains with their respective owners. For instance, the Bluetooth® trademark and logo are the property of Bluetooth SIG, Inc. Other trademarks belong to their rightful proprietors.

Given the compact size of the module, the "®" symbol is omitted from Bluetooth-related trademarks in compliance with applicable regulations.

Macnman Technologies Pvt. Ltd. reserves the right to modify the content of this manual to align with advancements in technology. Updated versions may be released without prior notification. Unauthorized modification, reproduction, or use of part or all of this manual without written consent from Macnman Technologies Pvt. Ltd. is strictly prohibited. Legal action will be taken against violators in accordance with Indian law.

By using this manual, you agree to comply with the terms stated herein.